

## Worksheet One

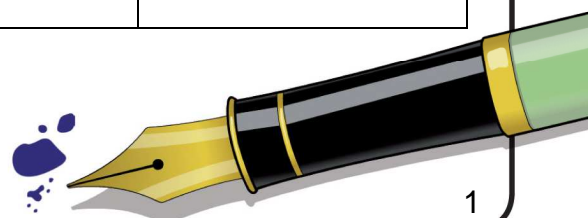
This worksheet accompanies *Suffixes*.

### Suffixes

Complete the table by adding the correct suffix from the box below to each root word. Then decide which word class the new word belongs to, and add in other examples of words which end in that suffix.

-ness	-ful	-ty	-ify	-ize
-ment	-able	-ation	-er	-ous
				-ly

Root + word class	Suffix	New meaning	New word class	Other examples
Drive (verb)		Someone who drives		
Do (verb)		Able to be done		
Danger (noun)		Harmful		
Sad (adjective)		Unhappiness		
Color (noun)		Full of color		
Quick (adjective)		In a quick manner		
Entertain (verb)		Amusement		
Cruel (adjective)		Cruel behavior		
Imagine (verb)		The ability to form ideas		
Intense (adjective)		To become more intense		
Symbol (noun)		To be a symbol for		



## Worksheet Two

This worksheet accompanies *Suffixes*.

### -er suffixes

The -er suffix turns some words into nouns and some into comparative adjectives. Can you sort these words with -er suffixes into the correct groups?

#### nouns

#### comparative adjectives

drummer  
weaker  
stronger

baker  
driver  
happier

farmer  
reader  
nicer

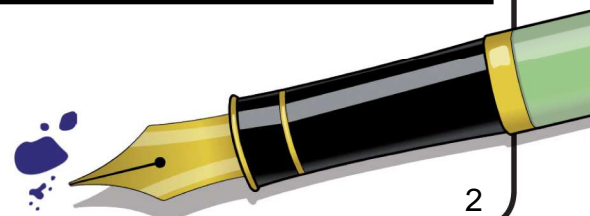
clearer  
prettier  
teacher

### -al and -ic suffixes

Fill in the spaces in this passage with the correct suffix.

It was a sensational environment\_\_\_ breakthrough! The photograph\_\_\_ opportunities were immense – this would be on the front page of all the nation\_\_\_ papers.

From a person\_\_\_ perspective, to have found a solution to the season\_\_\_ volcan\_\_\_ eruptions was a lifetime's achievement. From a scientif\_\_\_ viewpoint, the repercussions were enormous.



## Worksheet Three

This worksheet accompanies *Suffixes*.

### **-ist suffixes**

The suffix -ist often shows what jobs people do. Make jobs from the nouns below.

novel \_\_\_\_\_

balloon \_\_\_\_\_

journal \_\_\_\_\_

machine \_\_\_\_\_

art \_\_\_\_\_

### **-est suffixes**

What are the superlative forms of these adjectives?

clever \_\_\_\_\_

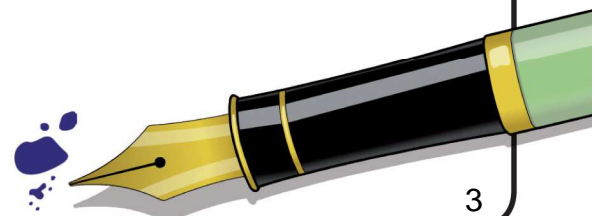
long \_\_\_\_\_

small \_\_\_\_\_

tall \_\_\_\_\_

pretty \_\_\_\_\_

happy \_\_\_\_\_



## Worksheet Four

This worksheet accompanies *Suffixes*.

### **-ive suffixes**

The suffix -ive means performing or attending to a specific action. Change the root words to complete the sentences below.

1. She was an \_\_\_\_\_ (**investigate**) journalist.
2. They tried to think of \_\_\_\_\_ (**alternate**) solutions.
3. He was given a \_\_\_\_\_ (**commemorate**) plaque to help him remember the important day.
4. It was a dangerous job, so you have to wear \_\_\_\_\_ (**protect**) clothing.
5. The new detergent was very \_\_\_\_\_ (**effect**).

### **-ery and -ary suffixes**

Add either the -ery or -ary suffix to each root word.

- |                    |                    |
|--------------------|--------------------|
| 1. annivers_____   | 8. secret_____     |
| 2. imagin_____     | 9. confection_____ |
| 3. extraordin_____ | 10. machin_____    |
| 4. tempor_____     | 11. second_____    |
| 5. batt_____       | 12. exempl_____    |
| 6. recov_____      | 13. diction_____   |
| 7. trick_____      | 14. judici_____    |



## Worksheet Five

This worksheet accompanies *Suffixes*.

### -ible and -able suffixes

Decide whether to add the suffix -ible or -able to each word and write the word (including the suffix) in the correct box below.

**-able**

**-ible**

value                  destruct                  enjoy                  knowledge                  force  
remark                  notice                  digest                  pass                  reverse

### Rules

---

---

---

---

---

---



## Worksheet Six

This worksheet accompanies *Suffixes*.

### Suffixes

Add as many suffixes as you can to each word below.

pretty

---

---

---

---

---

---

---

clever

---

---

---

---

---

---

---

photograph

---

---

---

---

---

---

---

complete

---

---

---

---

---

---

---

direct

---

---

---

---

---

---

---

time

---

---

---

---

---

---

---

