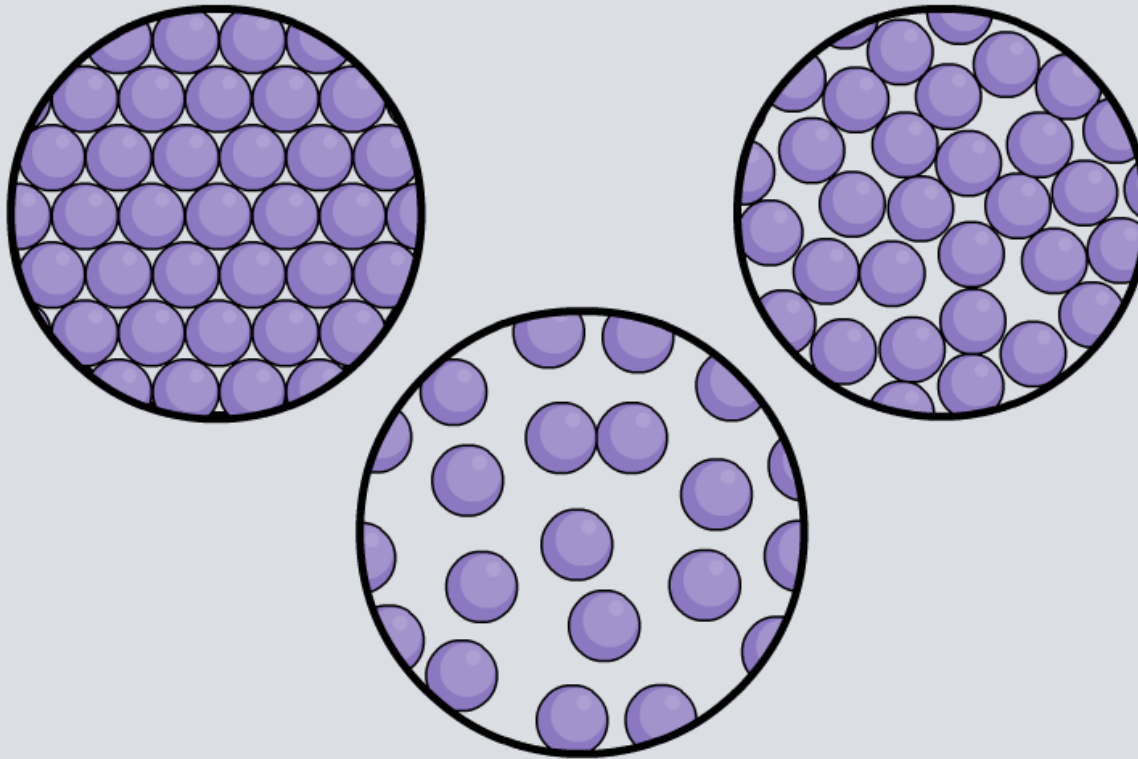
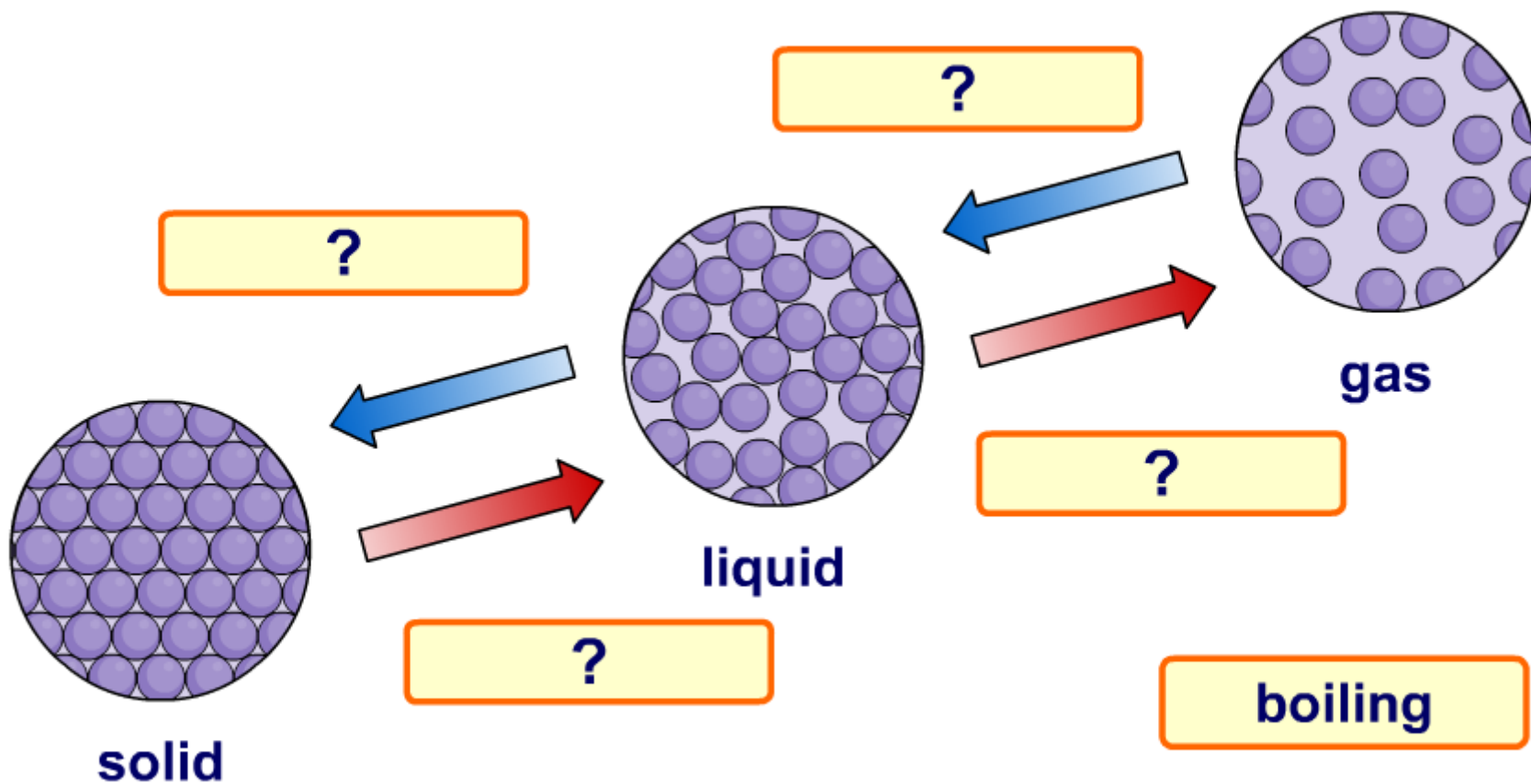


## Changing State



What are the changes of state?



?

?

?

?

?

boiling

C

solve

↺

# Changes of state – heating curve

If a solid is heated, its temperature rises until it reaches its melting point.

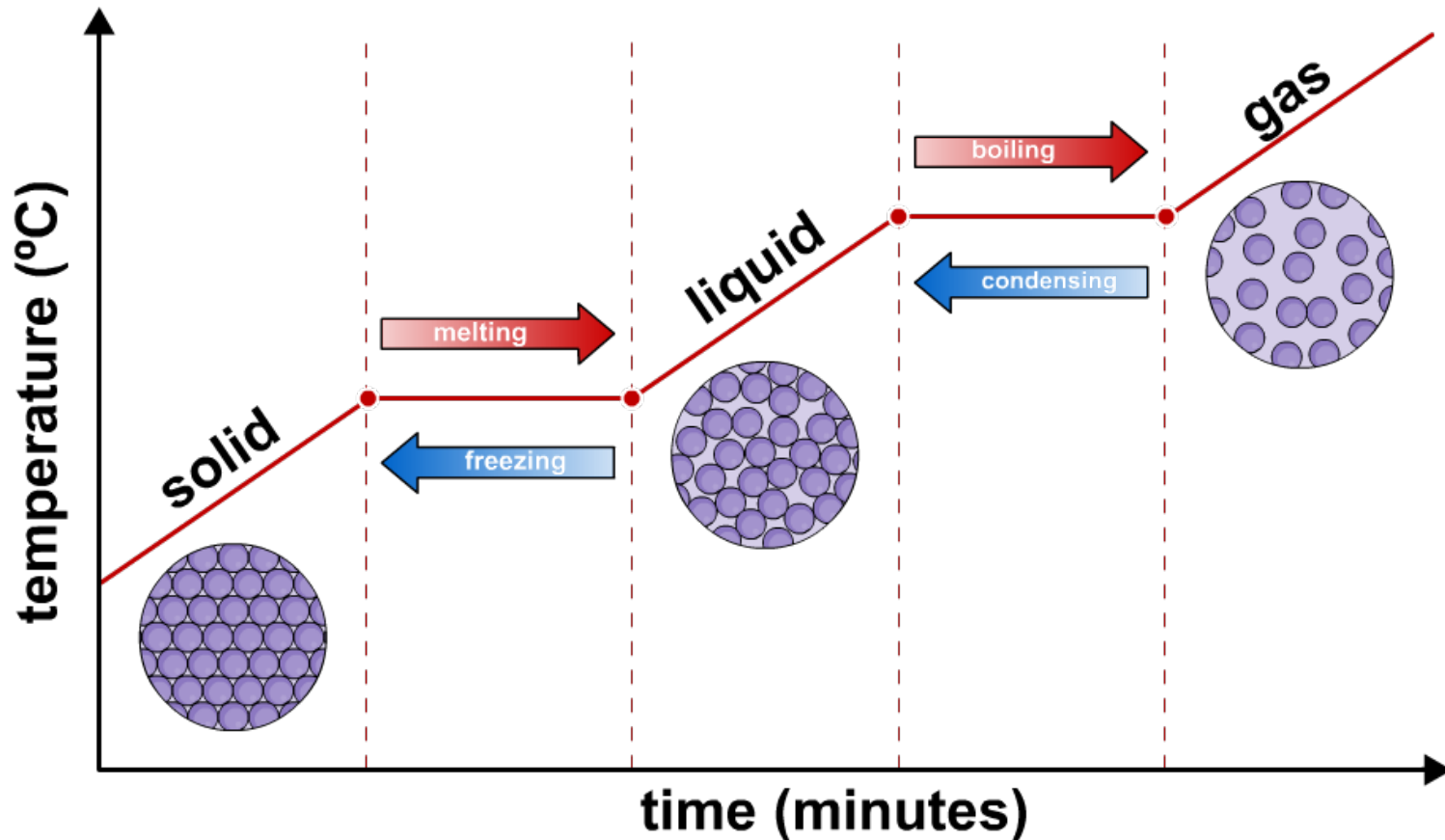
At the melting point, the temperature stops rising while the solid melts, because energy goes into separating the particles.

Once the solid has melted, the temperature rises again until it reaches the boiling point.



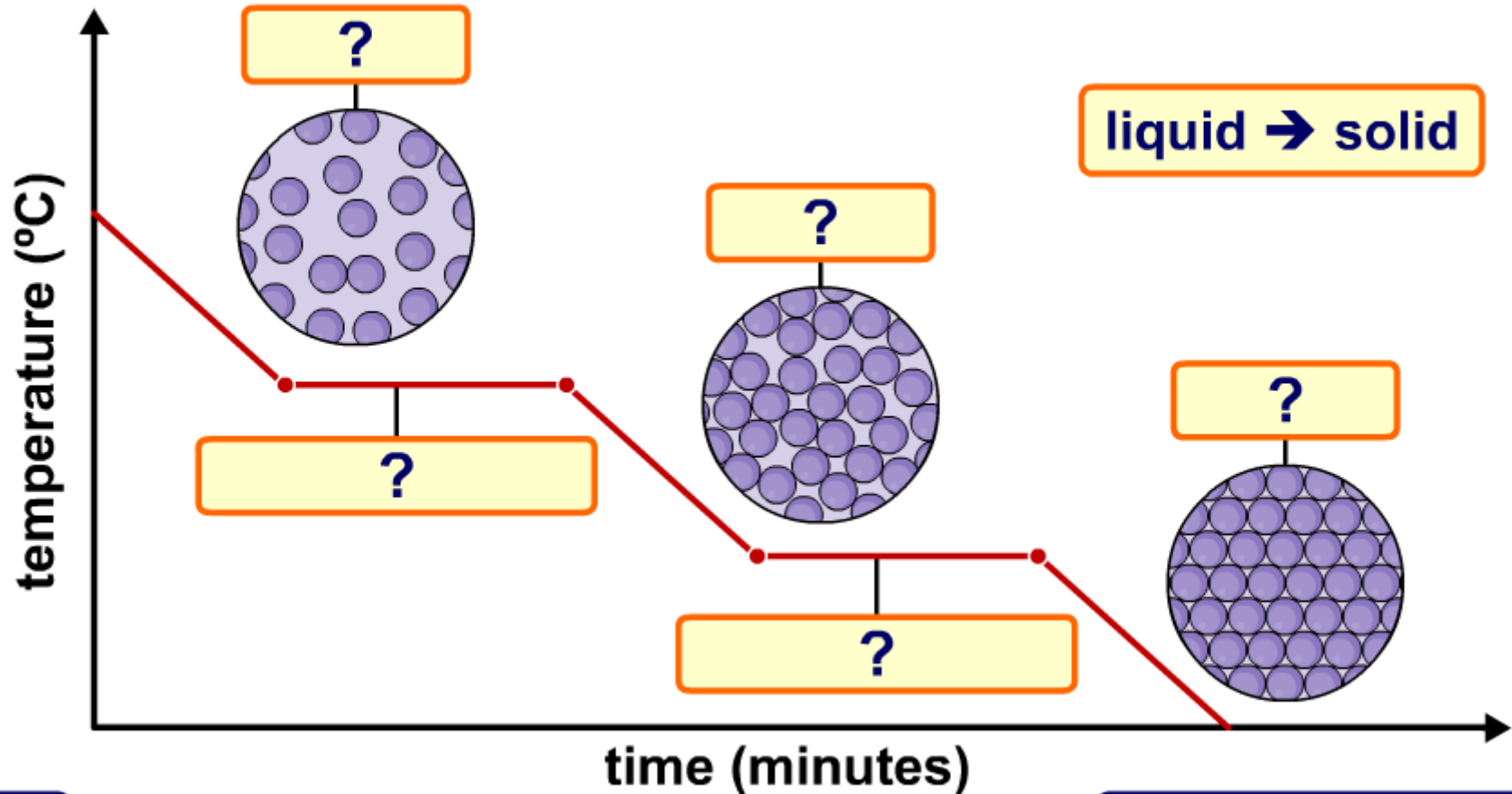
# Changes of state – heating curve

At the boiling point, the temperature again stays the same as energy goes into further separating the particles.



# Changes of state – cooling curve

What are the labels for this cooling curve for a gas?



?

C

solve

↶