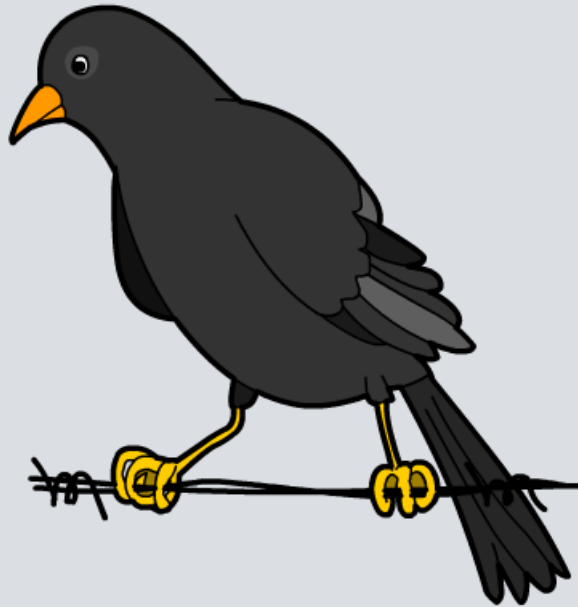
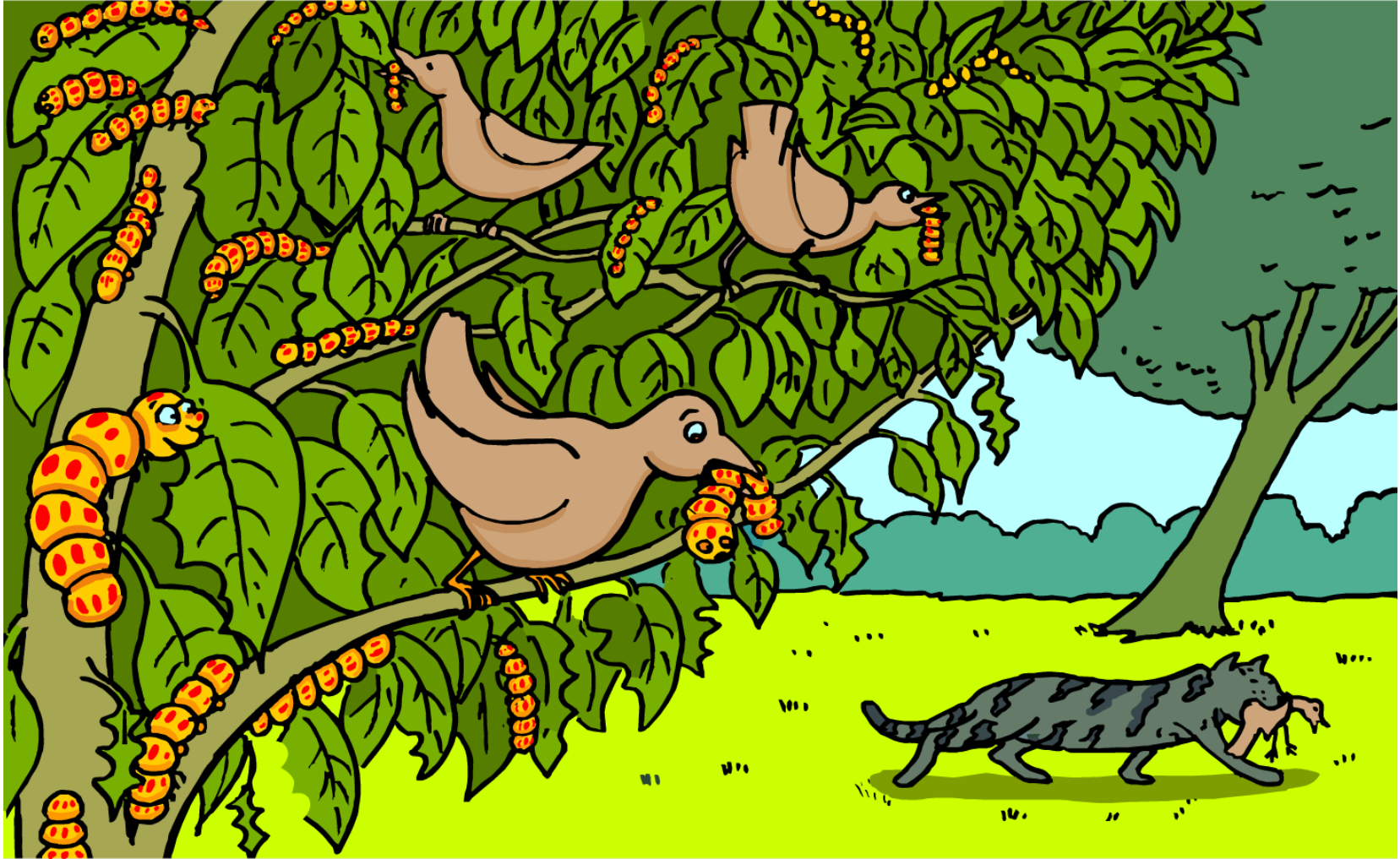


Food Chains



What feeding relationships are shown here?





Match the feeding relationship terms to their definitions

food chain

producer

consumer

herbivore

carnivore

omnivore

biomass

trophic

organism that eats plants and animals

living material that makes up organisms

organism that only eats animals

organism that only eats plants

sequence showing feeding relationships

a feeding level in a food chain

organism that makes its own food

organism that eats other organisms



solve





How is energy transferred in a food chain?

The Sun is the source of all energy. How is this energy transferred through a food chain?

Click the Sun or "**play**" to find out more.



Why aren't food chains very long?

This tiger is a top predator; the final level in a food chain.



Most food chains only contain four or five species. Why is this?

Energy is lost at all levels in food chains. Animals at the top of a long food chain would not get enough energy to survive.

