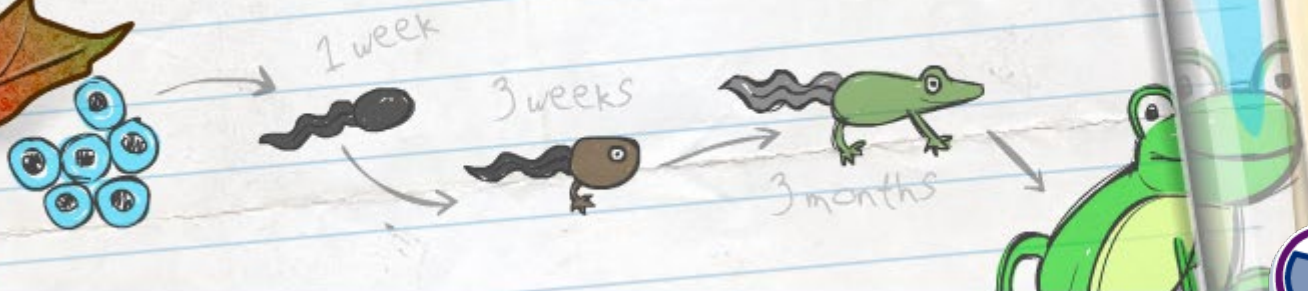


Living Things



Living things





Can you remember what was found where?

Place	Plant	Animal
leaf pile	lichen	spider
flowerbed	flowers	ladybug
log	fungus	earwig
pond	water lily	tadpoles
vegetable patch	lettuce	caterpillar
tree	oak tree	birds

How many did you remember?





If you go looking for animals and plants...

- treat them with care
- leave things the way you found them
- wash your hands afterwards.



Good luck!

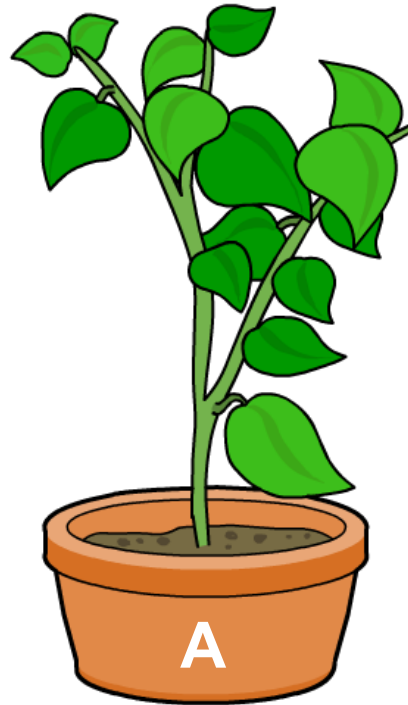
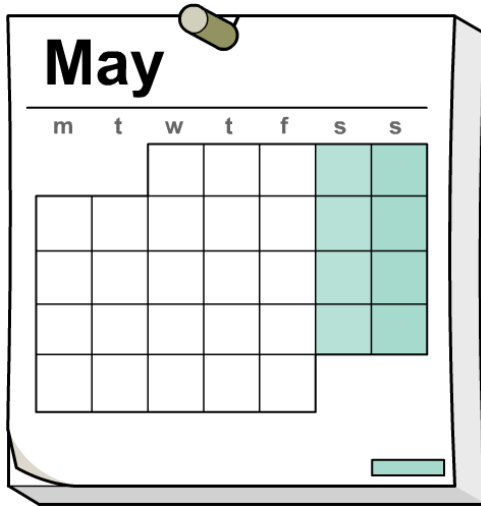
Living things



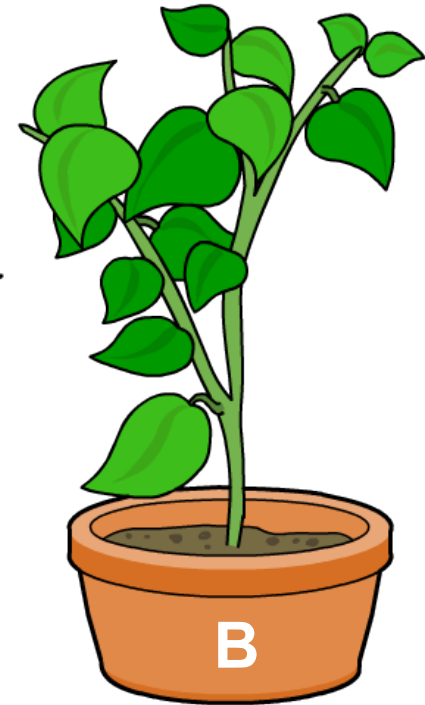
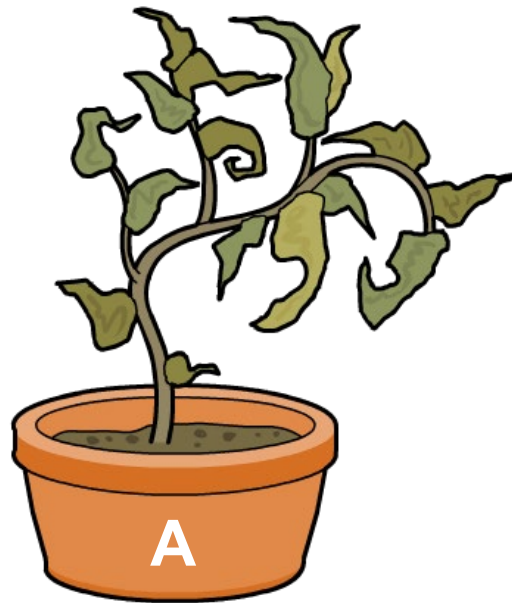
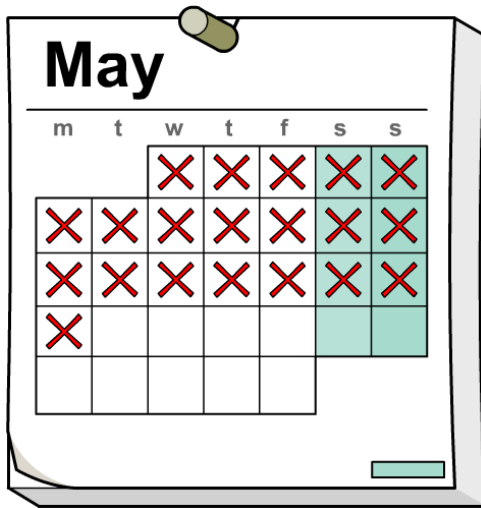
Living things



What will happen if you only water **one** of these plants?



What has happened to the plants after twenty days?





Plant	What does the plant look like?
A (no water)	yellow wrinkly leaves dry tall fallen leaves droopy stem
B (water)	green tall straight stem solid lots of leaves flowers juicy

Can you think of your own words to describe the plants?

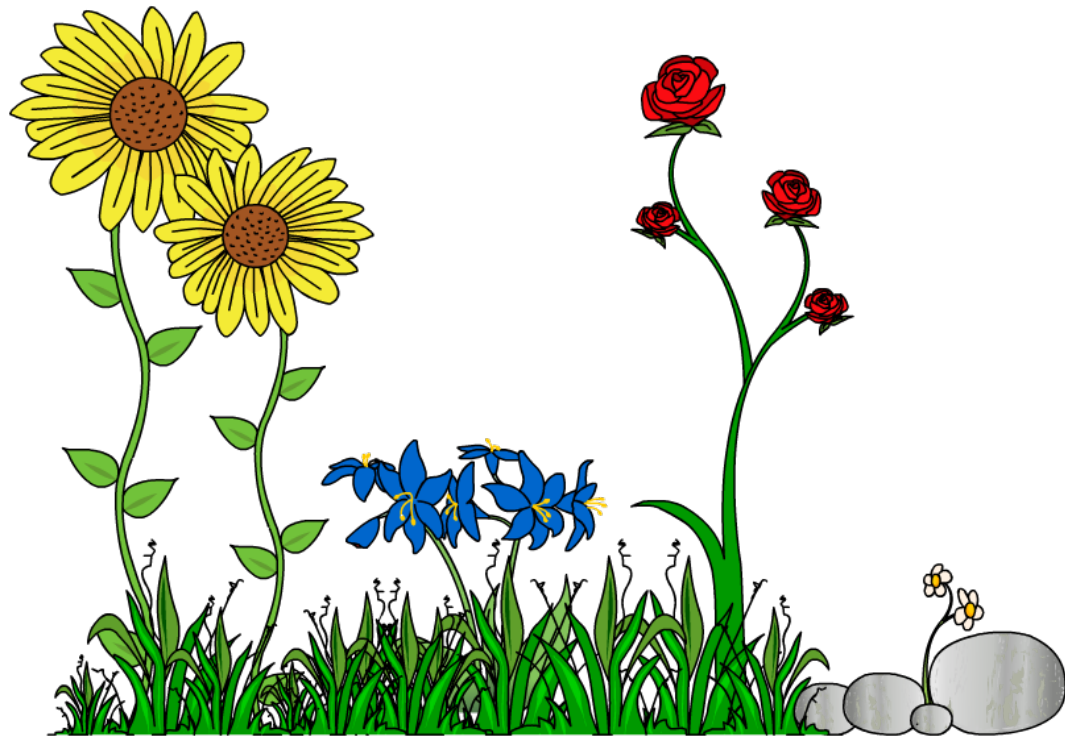




We know that plants need **water**.

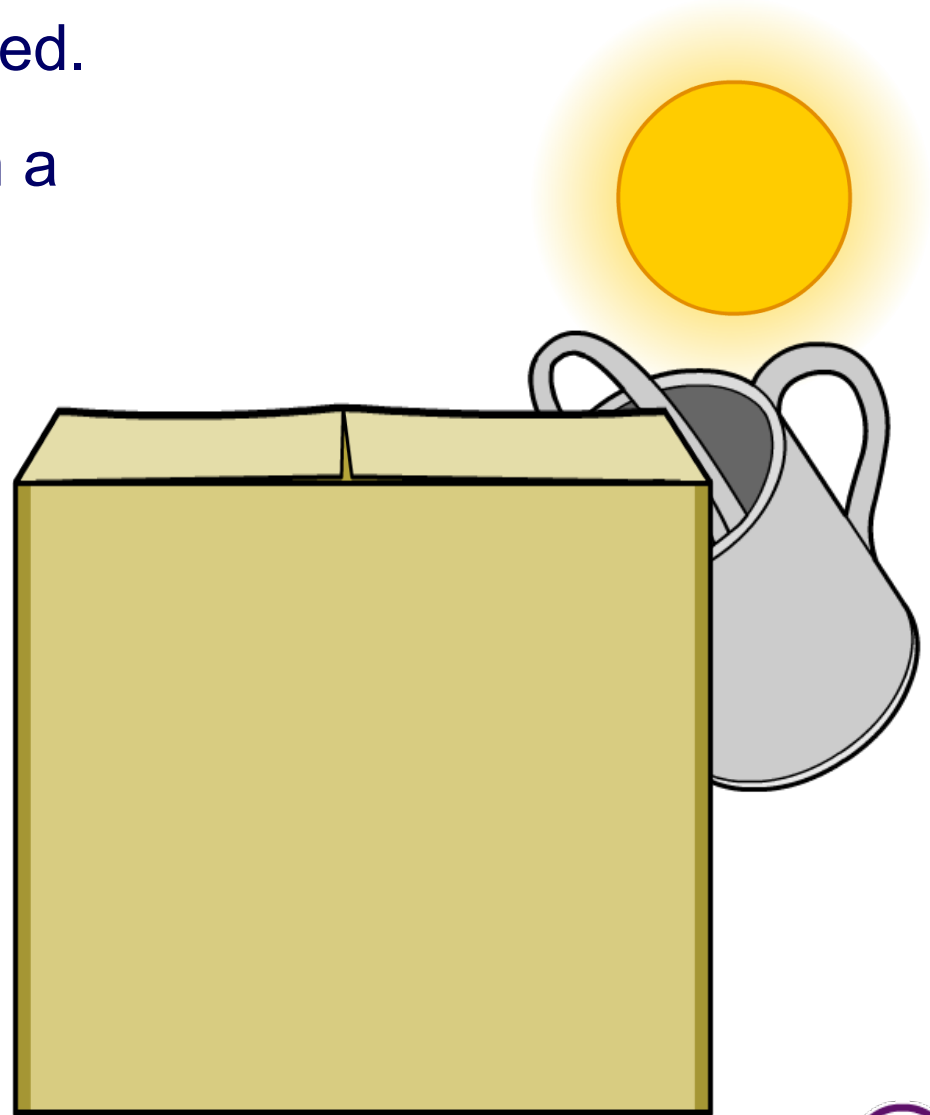
But how do we know that they need **light** too?

We can do a **test** to find out if plants need light!



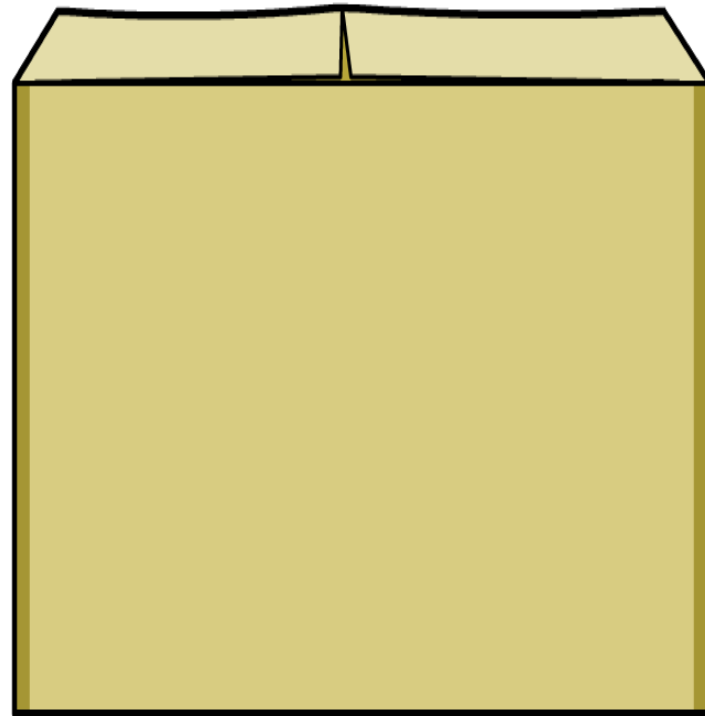
Day 1: Both plants are watered.

The red plant is covered with a cardboard box.



Day 14: The blue plant has grown big and strong, but the red plant has become yellow and floppy.

Why?





Plants get **yellow and floppy** if they don't get **light**.

Plants need **light** to stay green and grow well.

